

PBBS File List Manager

Contents

Menus

[Main Menu](#)

[File Menu](#)

[Edit Menu](#)

[Info Menu](#)

[Search Menu](#)

[Configuration Menu](#)

[Windows Menu](#)

[About Menu](#)

Windows and Lists

[Configure Windows](#)

[Display File List Window](#)

[Edit File Description Window](#)

[Main List Window](#)

[File List](#)

[Forum list](#)

[File Area](#)

Buttons and Other Areas

[Display File List Button](#)

[Edit File Description Button](#)

[Edit File List Button](#)

[Display Area](#)

[Info Area](#)

[Status Bar](#)

Main Menu



This is the Main Menu, From here you have access to the numerous options available. Please click one of the menu selections for a more detailed description.

Info Item

This item shows a dialog box with the number of Records, and the Total Size of the current File List.

Configuration Item

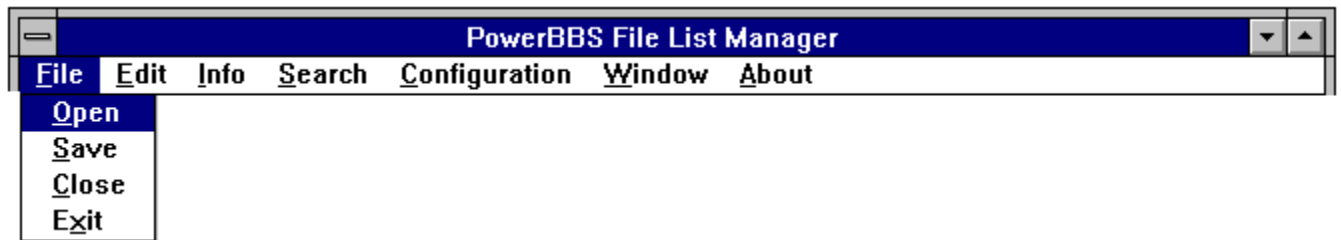
This item opens the Configuartion Window , From which you set numerous options.

Change *.DAT File



To get to this Item, You must first close ALL file list windows, then select the File Menu and choose the Change *.DAT File.
Use this Item to load the in Data for a Differnt Node I.E. PowrBBS1.DAT or Powrbbs2.DAT.

File Menu



The file menu has the following selections:

Open

This item opens new Main List Windows . You may open up to eight (8) File List Windows at any one time.

Save

This Item Saves the currently selected File List Window, to Disk. Before the Save, PBBSFMGR makes a backup copy using the *.BAK for a filename template.

Close

This item close the currently selected File List Window. Before close the window, PBBSFMGR check to see if it needs to be saved, if so, you are ask if you want to save the list.

Exit

this item closes all open File List Windows and exits PBBSFMGR. Before closing each File List Window, PBBSFMGR check to see if they need to be saved, if so, you are given a chance to save the list.

Edit Menu



The Edit menu has the following items:

Cut

This item cuts the currently selected record to the clipboard. No Files are manipulated.

Copy

This item Copies the currently selected record to the clipboard. No Files are manipulated.

Paste

This item Inserts the clipboard before the currently selected record. No Files are manipulated.

Edit File List

This item opens your favorite ASCII editor with the currently selected file list, after you complete your editing and close your editor, PBBSFMGR reads the edited file list back into memory. For More information see : [Edit File List Button](#) .

Delete

This item opens the delete record dialog box. From this box you may choose one of the following buttons.

Both , to delete botthe the file and the record.

File , to delete the File from your disk.

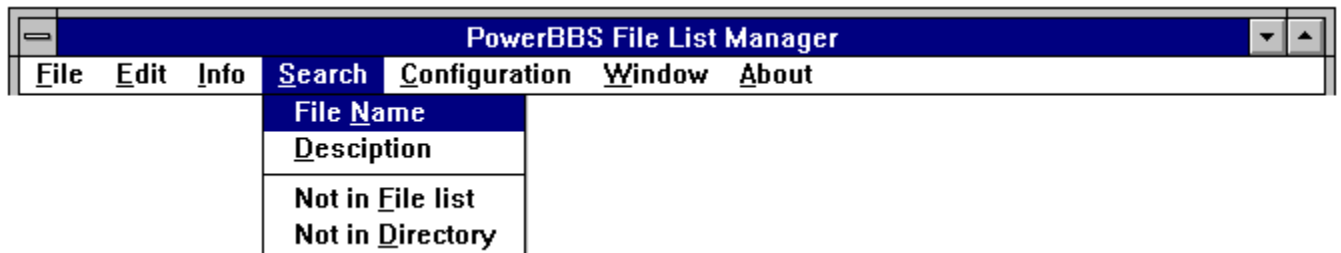
Record , to delete the Record form the file list.

Cancel , to cancel the operation and retrun.

Info Menu



Search Menu



The Search menu has the following items:

FileName

This Item opens a dialog box. Enter the File Name to search for, and press ENTER.

Description

This Item opens a dialog box. Enter the Text to search for, and press ENTER.

Not in List

This item searches the current Directory, for files not in the list. After the search, if there are any files found, PBBSFMGR opens a Select file name window. Select the file names you wish to add to the current file list, and press ENTER. PBBSFMGR will loop through the selected files, Prompting you for a Description, then adding the record to the current file list.

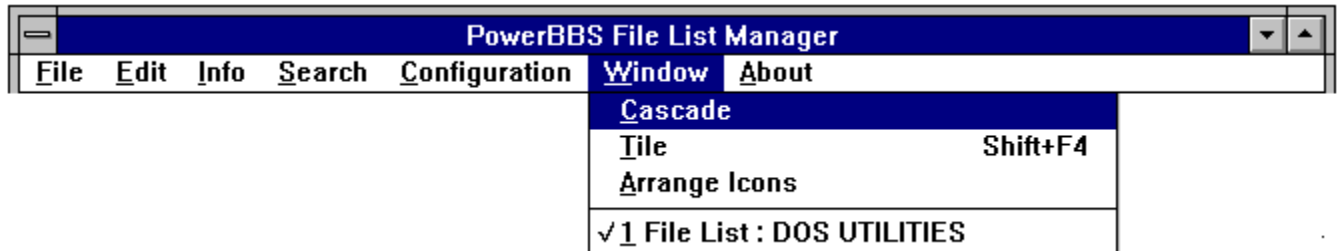
Not in Directory

This Item Searches the current file list for files not in the Directory. After the search, if there are any filenames found, PBBSFMGR opens a Select file name window. Select the file names you wish removed from the file list. when you have selected all the file names you wish removed, press ENTER, and PBBSFMGR will delete the selected records.

Configuration Menu



Windows Menu



The Windows menu has the following items:

Tile

This Item Tiles all child windows.

Cascade

This Item Cascades all child windows.

Arrange Icons

Arranges all Icons.

Window List

The Window List is a list of Open child windows. Select one to bring that child to the top.

About Menu



When you select this menu item, it opens the About Windows. Soon there will be a help menu in this position...

Configure Window

The image shows a 'Configuration' dialog box with the following fields and options:

- Sysop Information:**
 - Full Name : GERRAL REEVES
 - PBBS Reg#
 - Path/FileName to Editor. d:\Windows\notepad.exe
- Drag-Drop:**
 - Confirmation:
 - Action:
 - Move:
 - Copy:
 - Record:
 - File:

Buttons: OK, Cancel

This is the Configure window. First set the Path/FileName for your ASCII editor. Then set the Confirmation for the drag-drop, set it to Checked, if you want a confirm dialog box when you drag-drop files. next select MOVE or COPY for the drag-drop operations. If you select copy, then you must also select, File and/or Record, this tells PBBSFMGR what to copy. The Sysop Name is optional.

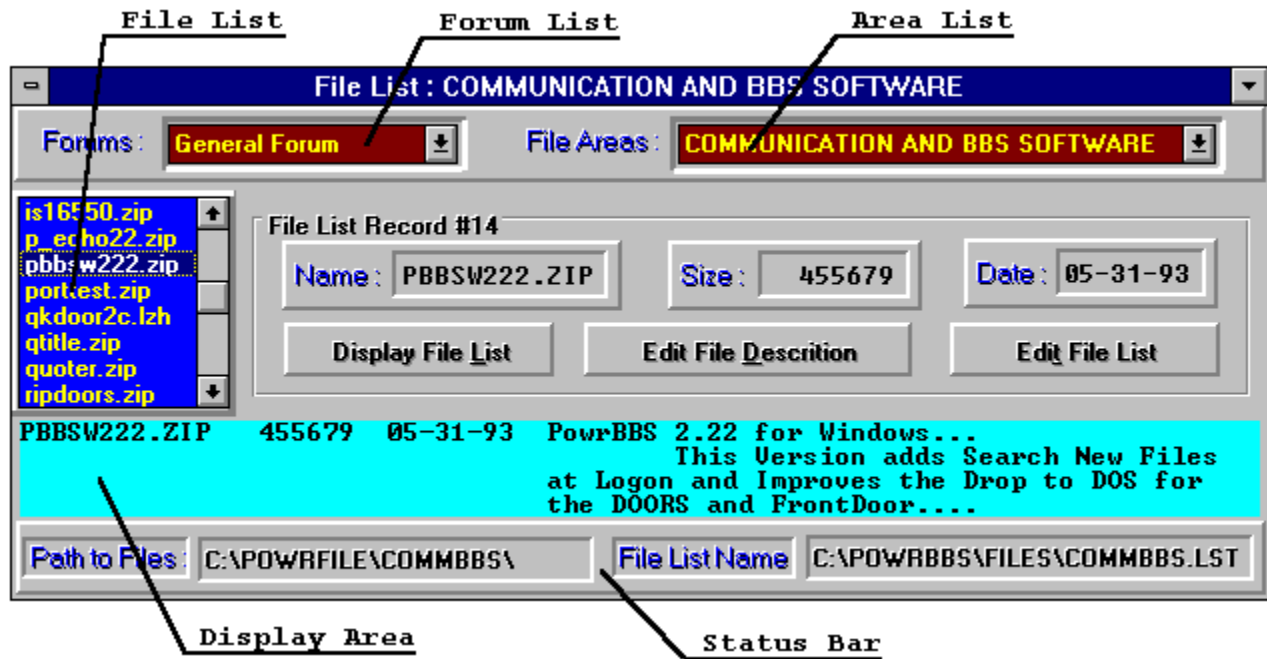
The Drag-Drop Move check box, when checked, tells PBBSFMGR to delete both the File and the File List Record.

The Drag-Drop Copy check box, when checked, tells PBBSFMGR not to Delete the File or the File List Record. Also, when checked you must select File and/or Record, to be copied. The File And Record check boxes tell PBBSFMGR what to copy.

Path/FileName = a DOS qualified path/filename.
I.E. "C:.EXE"

Main List Window

Welcome to the PBBS File List Manager. You should already be familiar with PowerBBS and the File Setup of your BBS. We are about to make you familiar with PBBSFMGR. Below is a picture of a Main List Window. Please point to an area on the window, and click your left mouse button.

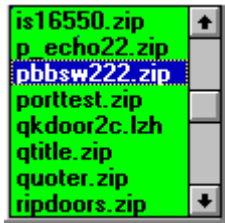


see also:

- [File List](#)
- [Forum list](#)
- [File Area](#)
- [Display Area](#)
- [Info Area](#)
- [Status Bar](#)

File List

This is the File List Box. In this box, is a list of all files that are in the current area's file directory. You may drag file name from this list to the Display Area on another list window. The Selected file indicates which record is selected. You may also Double Click a file name to Shell to a program of your choice (configurable in the Configuration window) with the selected file as the data file.



see also:

[Main List Window](#)

[File Area](#)

[Display Area](#)

[Status Bar](#)

Forum List

li100 The Forum List is where you choose which for to read the Area list from. Each Main List Window may have a different Forum selected. When you select a Froum, PBBSFMGR will read the Area's into the list and read the first file list into memory, at this time you will see the first File record display in the Display Area.



see also:

[Main List Window](#)

[Area list](#)

[Display Area](#)

File Area

This combo box contains a list of File Area available in the selected Forum Area . When you select an File Area, PBBSFMGR loads the File List into memory.



The image shows a horizontal toolbar with two dropdown menus. The first dropdown is labeled "Forums:" and has "General Forum" selected. The second dropdown is labeled "File Areas:" and has "COMMUNICATION AND BBS SOFTWARE" selected. Both dropdowns have a small downward arrow icon on the right side.

see also:

Main List Window

Display Area

The Display Area is like a window, or view port, into the current File List. You may place the cursor on any line that contains a FileName and press enter to select that record.

```
PBBSW222.ZIP  455679  05-31-93  PowrBBS 2.22 for Windows...  
                This Version adds Search New Files  
                at Logon and Improves the Drop to DOS for  
                the DOORS and FrontDoor....
```

see also:

[Main List Window](#)

Info Area

This is the Info Area. in this area you will find, the file name, the file size, and the file date displayed. You will also find three buttons, the first button is a Display File List button, the second is a Edit Description Button, the thrid button is an Edit File List Button.

File List Record #14		
Name : PBBSW222.ZIP	Size : 455679	Date : 05-31-93
Display File List	Edit File Description	Edit File List

see also:

[Main List Window](#)

[Display File List Button](#)

[Display File List Window](#)

[Edit File Description Button](#)

[Edit File Description Window](#)

[Edit File List Button](#)

Status Bar

The Status Bar Always displays the path to the Files in the File List Box, and the path/filename of the selected File List.



see also:

Main List Window

Display File List Button

The Display File List Button, when pressed, will open the Display Main List Window. In this window you can view the Current File List.



see also:

[Main List Window](#)

[Info Area](#)

[Display File List Window](#)

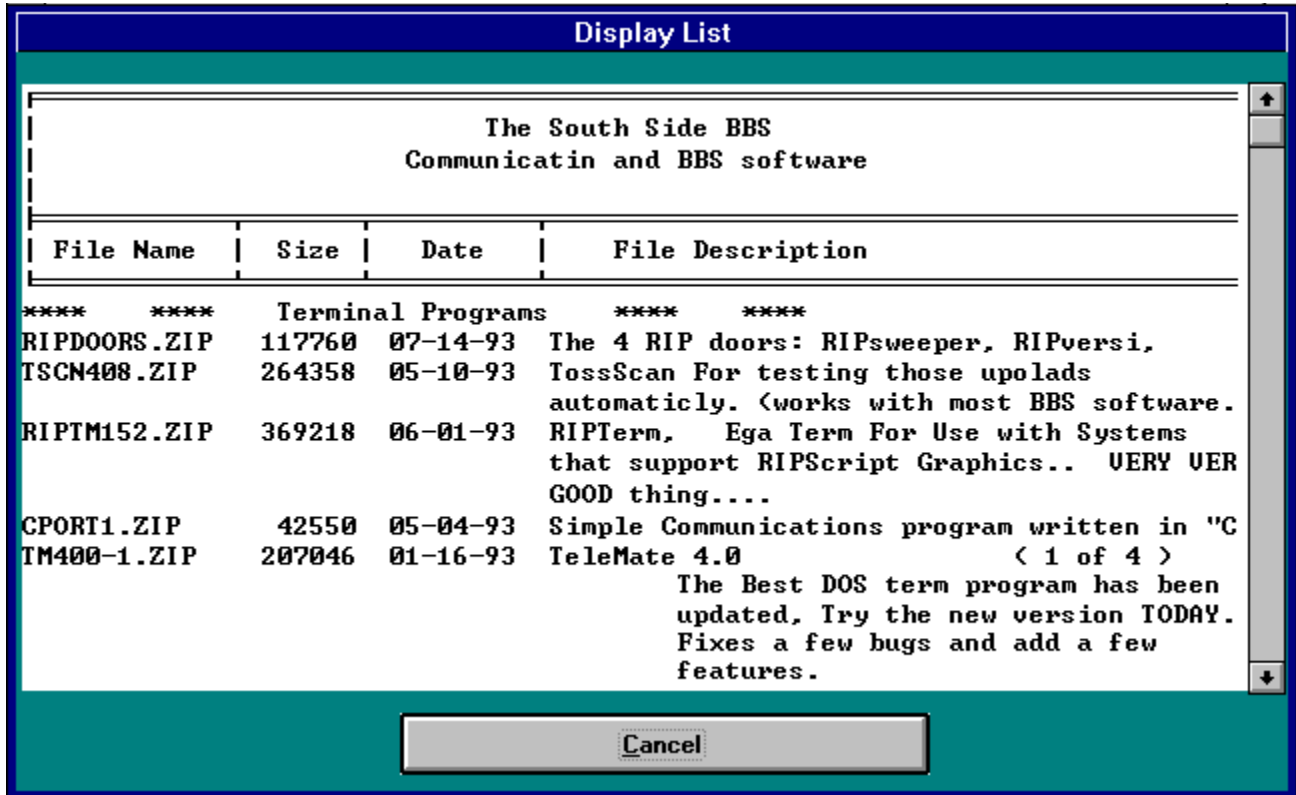
[Edit File Description Button](#)

[Edit File Description Window](#)

[Edit File List Button](#)

Display File List Window

This window is used to display the currently selected File List as it would look in the in a formatted text screen. If the File List is larger than the view area, a vertical scroll bar will be placed on the right-hand side of the view area. Below is a picture of the Display File List Window.



When you are done viewing the File List, press the Cancel Button to close the Display File List Window and return to the File List Window.

see also:

[Main List Window](#)

[Info Area](#)

[Display File List Button](#)

[Edit File Description Button](#)

[Edit File Description Window](#)

[Edit File List Button](#)

Edit File Description Button

The Edit Description Button opens the Edit File Description Window.



see also:

[Main List Window](#)

[Info Area](#)

[Display File List Button](#)

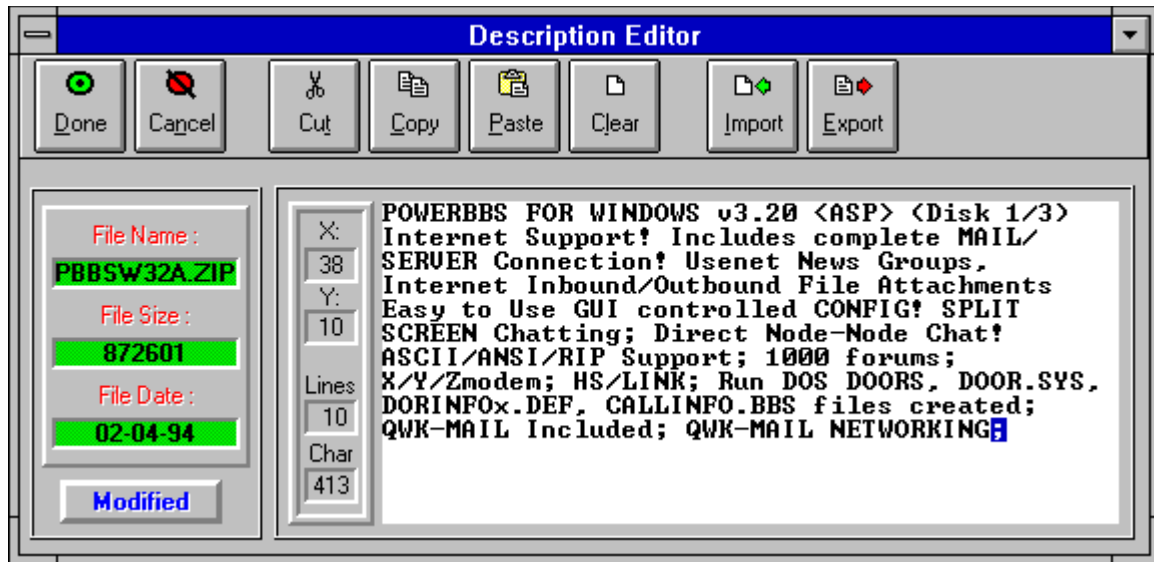
[Display File List Window](#)

[Edit File Description Window](#)

[Edit File List Button](#)

Description Editor Window

The Description Editor Window is where you can edit each individual file description. this window is also used to add records to the File List. This Window has been redesigned in verion 1.24. It is now quite simple to operate, the X,Y info boxes display the current position of the cursur in the edit box, the lines,char displays the number of lines and the number of characters in the edit box, respectively. The Info panel to the left displays the Read-Only info about the file; Name, Size and Date. The Buttons across the top function as labeled. The Import and Export Buttons will import/export a FILE_ID.DIZ description file.



see also:

[Main List Window](#)

[Info Area](#)

[Dispaly File List Button](#)

[Display File List Window](#)

[Edit File Description Button](#)

[Edit File List Button](#)

Edit File List Button

When you press this button PBBSFMGR Opens your favorite editor (Configurable from the Configure Window), and allows you to do any necessary editing to the File List. You may only have one editor open for each Main List Window you have open. After closing the Editor, PBBSFMGR will read the list back in and displays the first record.



see also:

[Main List Window](#)

[Info Area](#)

[Display File List Button](#)

[Display File List Window](#)

[Edit file description Button](#)

[Edit File Description Window](#)

